

The Complete **Plumbing** solution

## UPVC PIPES & FITTINGS FOR COLD WATER

### Application :

- Cold Water Plumbing in Building.
- Swimming Pools.
- Corrosive Fluid Transportation.
- Water Distribution Mains.
- Industrial Process Lines.

One Stop for multiple plumbing solution under one roof



### PRODUCT FEATURES:



Light Weight



Non Toxic



UV Resistant



Effective Cost



Lead Free



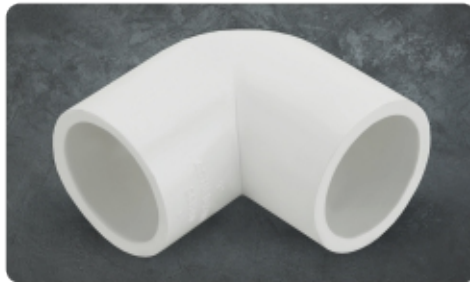
Easy to Install



Cold Water Suit.

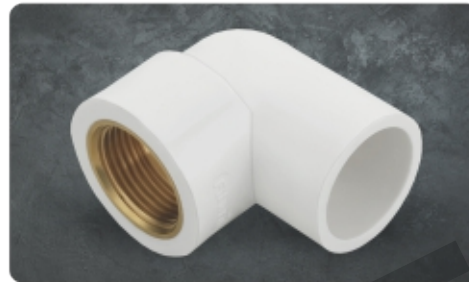


Lead Free uPVC Fittings in SCH-80 as per ASTM D2467



**ELBOW**

Size (Inch)	Size mm	Std.Pkd.	Qty./Box	RATE
1/2"	15	60	480	
3/4"	20	40	280	
1"	25	25	150	
1.1/4"	32	10	90	
1.1/2"	40	10	60	
2"	50	8	40	



**BRASS ELBOW**

Size (Inch)	Size mm	Std.Pkd.	Qty./Box	RATE
1/2"	15	50	350	
3/4"	20	25	225	
1"	25	20	120	
3/4"x1/2"	20x15	40	280	
1"x1/2"	25x15	25	175	
1"x3/4"	25x20	20	160	



**EQUAL TEE**

Size (Inch)	Size mm	Std.Pkd.	Qty./Box	RATE
1/2"	15	50	300	
3/4"	20	25	175	
1"	25	15	105	
1.1/4"	32	10	60	
1.1/2"	40	6	48	
2"	50	4	32	



**M.T.A.**

Size (Inch)	Size mm	Std.Pkd.	Qty./Box	RATE
1/2"	15	100	900	
3/4"	20	50	500	
1"	25	48	480	
1.1/4"	32	20	180	
1.1/2"	40	24	144	
2"	50	18	126	



**F.T.A.**

Size (Inch)	Size mm	Std.Pkd.	Qty./Box	RATE
1/2"	15	100	700	
3/4"	20	75	450	
1"	25	40	240	
1.1/4"	32	20	160	
1.1/2"	40	20	120	
2"	50	15	175	



**BRASS TEE**

Size (Inch)	Size mm	Std.Pkd.	Qty./Box	RATE
1/2"	15	35	245	
3/4"	20	25	175	
1"	25	15	105	
3/4"x1/2"	20x15	25	200	
1"x1/2"	25x15	20	140	
1"x3/4"	25x20	15	105	



**BRASS M.T.A.**

Size (Inch)	Size mm	Std.Pkd.	Qty./Box	RATE
1/2"	15	50	400	
3/4"	20	25	275	
1"	25	25	125	
1.1/4"	32	20	100	
1.1/2"	40	12	48	
2"	50	9	36	
3/4"x1/2"	20x15	50	350	
1"x1/2"	25x15	30	270	
1"x3/4"	25x20	25	225	



**BRASS F.T.A.**

Size (Inch)	Size mm	Std.Pkd.	Qty./Box	RATE
1/2"	15	50	500	
3/4"	20	50	300	
1"	25	25	125	
1.1/4"	32	20	100	
1.1/2"	40	12	48	
2"	50	9	45	
3/4"x1/2"	20x15	50	400	
1"x1/2"	25x15	40	280	
1"x3/4"	25x20	30	270	



**COUPLER**

Size (Inch)	Size mm	Std.Pkd.	Qty./Box	RATE
1/2"	15	100	600	
3/4"	20	60	420	
1"	25	30	210	
1.1/4"	32	20	120	
1.1/2"	40	15	60	
2"	50	9	63	



Lead Free uPVC Fittings in SCH-80 as per ASTM D2467



**END CAP**

Size (Inch)	Size mm	Std.Pkd.	Qty./Box	RATE
1/2"	15	50	1000	
3/4"	20	100	600	
1"	25	50	400	
1.1/4"	32	40	280	
1.1/2"	40	20	160	
2"	50	15	120	



**UNION**

Size (Inch)	Size mm	Std.Pkd.	Qty./Box	RATE
1/2"	15	50	300	
3/4"	20	25	175	
1"	25	15	120	
1.1/4"	32	10	70	
1.1/2"	40	6	54	
2"	50	8	32	



**METAL CLAMP**

Size (Inch)	Size mm	Std.Pkd.	Qty./Box	RATE
1/2"	21	100	1000	
3/4"	27	100	800	
1"	34	100	600	
1.1/4"	42	100	500	
1.1/2"	49	100	400	
2"	61	100	300	



**REDUCER BUSH**

Size (Inch)	Size mm	Std.Pkd.	Qty./Box	RATE
3/4"x1/2"	20x15	100	1000	
1"x1/2"	25x15	50	600	
1"x3/4"	25x20	50	600	
1.1/4"x1/2"	32x15	50	350	
1.1/4"x3/4"	32x20	50	350	
1.1/4"x1"	32x25	50	300	
1.1/2"x1/2"	40x15	35	245	
1.1/2"x3/4"	40x20	35	245	
1.1/2"x1"	40x25	35	245	
1.1/2"x1.1/4"	40x32	35	245	



**REDUCER COUPLER**

Size (Inch)	Size mm	Std.Pkd.	Qty./Box	RATE
3/4"x1/2"	20x15	70	420	
1"x1/2"	25x15	50	300	
1"x3/4"	25x20	40	240	
1.1/4"x1/2"	32x15	35	210	
1.1/4"x3/4"	32x20	30	210	
1.1/4"x1"	32x25	20	160	
1.1/2"x1/2"	40x15	24	120	
1.1/2"x3/4"	40x20	24	120	
1.1/2"x1"	40x25	24	120	
1.1/2"x1.1/4"	40x32	15	75	
2"x1/2"	50x15	24	72	
2"x3/4"	50x20	24	72	
2"x1"	50x25	24	72	
2"x1.1/4"	50x32	24	72	
2"x1.1/2"	50x40	24	72	



**REDUCER TEE**

Size (Inch)	Size mm	Std.Pkd.	Qty./Box	RATE
3/4"x1/2"	20x15	30	180	
1"x1/2"	25x15	20	140	
1"x3/4"	25x20	20	120	
1.1/4"x1/2"	32x15	10	70	
1.1/4"x3/4"	32x20	10	70	
1.1/4"x1"	32x25	10	70	
1.1/2"x1/2"	40x15	8	56	
1.1/2"x3/4"	40x20	10	60	
1.1/2"x1"	40x25	5	50	
1.1/2"x1.1/4"	40x32	5	45	
2"x1/2"	50x15	4	32	
2"x3/4"	50x20	4	32	
2"x1"	50x25	4	32	
2"x1.1/4"	50x32	4	32	
2"x1.1/2"	50x40	4	32	



**ELBOW 45°**

Size (Inch)	Size mm	Std.Pkd.	Qty./Box	RATE
1/2"	15	60	540	
3/4"	20	40	280	
1"	25	25	175	
1.1/4"				



**STEP OVER BEND**

Size (Inch)	Size mm	Std.Pkd.	Qty./Box	RATE
1/2"	15	20	180	
3/4"	20	15	120	
1"	25	10	60	



**LONG BEND**

Size (Inch)	Size mm	Std.Pkd.	Qty./Box	RATE
1/2"	15	20	180	
3/4"	20	15	120	
1"	25	10	60	



Lead Free uPVC Fittings in SCH-80 as per ASTM D2467



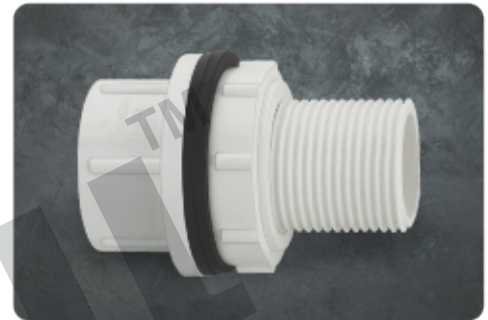
**TANK CONT.**

Size (Inch)	Size mm	Std.Pkd.	Qty./Box	RATE
1/2"	15	30	360	
3/4"	20	40	280	
1"	25	25	150	
1.1/4"	32	10	90	
1.1/2"	40	8	72	
2"	50	6	42	



**PIPE TANK NIPPLE**

Size (Inch)	Size mm	Std.Pkd.	Qty./Box	RATE
1/2"	15	30	240	
3/4"	20	25	175	
1"	25	20	120	
1.1/4"	32	10	80	
1.1/2"	40	8	64	
2"	50	6	42	



**SOCKET TANK NIPPLE**

Size (Inch)	Size mm	Std.Pkd.	Qty./Box	RATE
1/2"	15	50	400	
3/4"	20	40	240	
1"	25	25	150	
1.1/4"	32	20	120	
1.1/2"	40	20	100	
2"	50			



**BALL VALVE**

Size (Inch)	Size mm	Std.Pkd.	Qty./Box	RATE
1/2"	15	20	360	
3/4"	20	12	216	
1"	25	8	144	
1.1/4"	32	5	90	
1.1/2"	40	3	54	
2"	50	2	36	



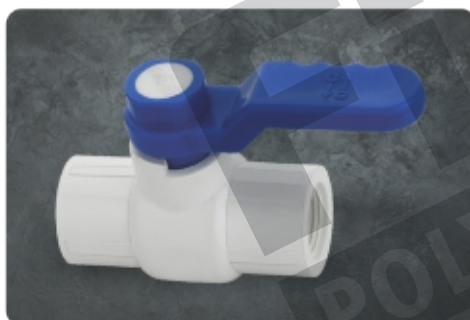
**LONG HANDEL BALL VALVE**

Size (Inch)	Size mm	Std.Pkd.	Qty./Box	RATE
1/2"	15	15	270	
3/4"	20	9	162	
1"	25	6	108	
1.1/4"	32	5	90	
1.1/2"	40	2	36	
2"	50	2	36	



**BALL VALVE THREAD**

Size (Inch)	Size mm	Std.Pkd.	Qty./Box	RATE
1/2"	15	20	360	
3/4"	20	12	216	
1"	25	8	144	



**LONG HANDEL BALL VALVE THREAD**

Size (Inch)	Size mm	Std.Pkd.	Qty./Box	RATE
1/2"	15	15	270	
3/4"	20	9	162	
1"	25	6	108	



**CONCEALED VALVE**

Size (Inch)	Size mm	Qty./Box	RATE
1/2"	15	3	
3/4"	20	3	
1"	25	3	



**STOP VALVE**

Size (Inch)	Size mm	Qty./Box	RATE
1/2"	15	3	
3/4"	20	3	
1"	25	3	



Lead Free uPVC Fittings in SCH-80 as per ASTM D2467



**CROSS TEE**

Size (Inch)	Size mm	Std.Pkd.	Qty./Box	RATE
1/2"	15	35	210	
3/4"	20	25	125	
1"	25	15	75	
1.1/4"	32			



**REDUCER ELBOW**

Size (Inch)	Size mm	Std.Pkd.	Qty./Box	RATE
3/4"x1/2"	20x15	50	250	
1"x1/2"	25x15	25	200	
1"x3/4"	25x20	25	175	



**THREAD ELBOW**

Size (Inch)	Size mm	Std.Pkd.	Qty./Box	RATE
1/2"	15	60	480	
3/4"	20	40	280	
1"	25	25	150	



**NAIL CLAMP**

Size (Inch)	Size mm	Std.Pkd.	Qty./Box	RATE
1/2"	21	100	1000	
3/4"	27	100	800	
1"	34	100	600	
1.1/4"	42	100	500	
1.1/2"	49	100	400	
2"	61	100	300	



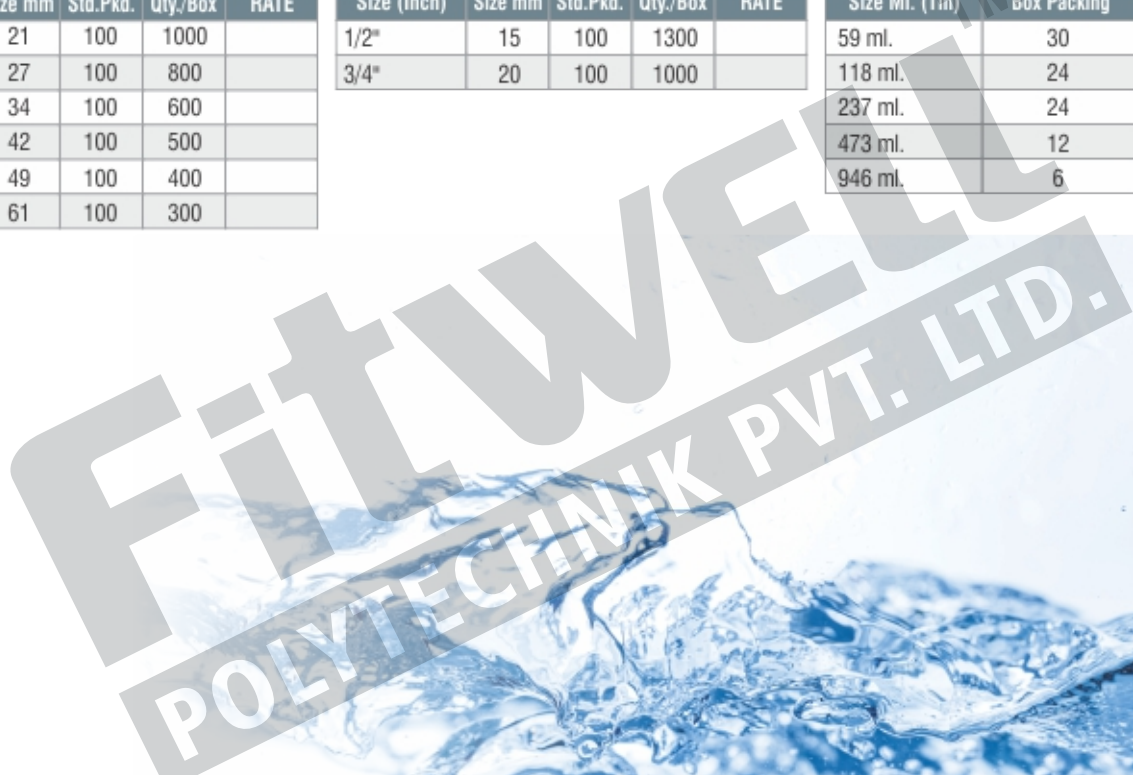
**END PLUG**

Size (Inch)	Size mm	Std.Pkd.	Qty./Box	RATE
1/2"	15	100	1300	
3/4"	20	100	1000	

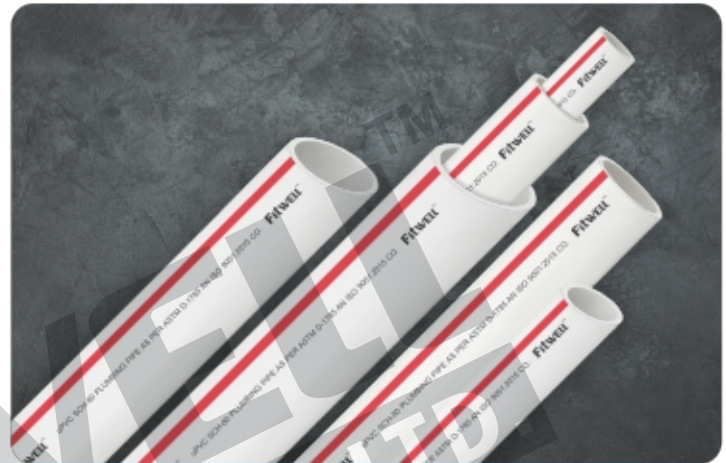


**SOLVENT CEMENT**

Size Ml. (Tin)	Box Packing	RATE
59 ml.	30	
118 ml.	24	
237 ml.	24	
473 ml.	12	
946 ml.	6	



## uPVC Pipes (SCH-40, SCH-80) ASTM D1785



### uPVC SCH-40

Size (Inch)	Size mm	3Mtr. Pack	6Mtr. Pack	RATE 3Mtr.
1/2"	15	50	25	
3/4"	20	40	20	
1"	25	25	15	
1.1/4"	32	15	10	
1.1/2"	40	15	10	
2"	50	10	5	
2.1/2"	65	5	3	
3"	80	4	3	

### uPVC SCH-80

Size (Inch)	Size mm	3Mtr. Pack	6Mtr. Pack	RATE 3Mtr.
1/2"	15	50	25	
3/4"	20	40	20	
1"	25	25	15	
1.1/4"	32	15	10	
1.1/2"	40	15	10	
2"	50	10	5	
2.1/2"	65	5	3	
3"	80	4	3	

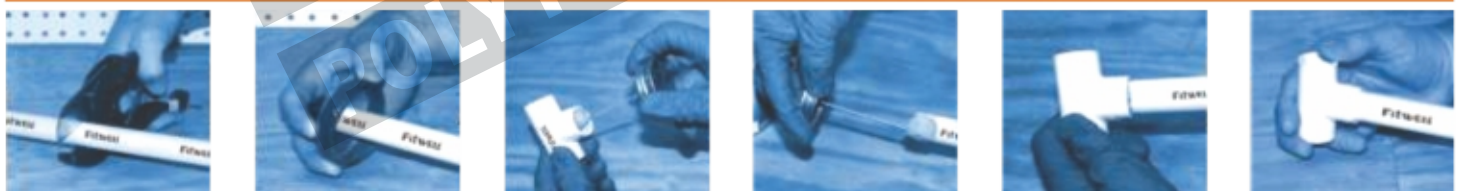
### STANDARDS

- ASTM D 1785 :** PVC Plastic Pipes, SCH-40 & SCH-80.
- ASTM D 2467 :** Socket Type PVC Plastic Fittings, SCH-80.
- ASTM D 2564 :** Solvent Cements for Plastic Pipes & Fittings.

### Pressure Rating of uPVC Pipes (SCH-40 & SCH-80)

SIZE	Pipes Size in Inch	1/2"	3/4"	1"	1 1/4"	1 1/2"	2"	2 1/2"	3"
	Pipes Size in mm	15	20	25	32	40	50	65	80
SCH-40	Average Outer Diameter (mm)	21.34	26.67	33.40	42.16	48.26	60.32	73.02	88.90
	Min. Wall Thickness (mm)	2.77	2.87	3.38	3.56	3.68	3.91	5.16	5.49
	Max. Work Pressure Rating (kg./cm <sup>2</sup> ) at 23°C	42.19	33.75	31.64	26.01	23.20	19.69	21.09	18.28
	Burst Pressure (kg./cm <sup>2</sup> )	131.70	106.20	99.30	81.40	73.10	61.40	66.90	57.90
SCH-80	Average Outer Diameter (mm)	21.34	26.67	33.40	42.16	48.26	60.32	73.02	88.90
	Min. Wall Thickness (mm)	3.73	3.91	4.55	4.85	5.08	5.54	7.01	7.62
	Max. Work Pressure Rating (kg./cm <sup>2</sup> ) at 23°C	59.76	48.51	44.29	36.56	33.04	28.12	29.53	26.01
	Burst Pressure (kg./cm <sup>2</sup> )	187.60	151.70	139.30	114.50	104.10	88.90	93.80	82.70

### INSTALLATION METHOD OF 'FITWELL' cPVC & uPVC PIPES & FITTINGS



#### Terms & Conditions :

- The above prices are Ex-Factory, Freight will be charged extra as applicable. • Taxes : GST will be Extra Charged. • Advance Payment.
- Payment should be deposited in our account against Perform a Invoice in terms & conditions of Perform a Invoice. • Late payment interest will be charged @ 18% Flat.
- Supply will be made within 7-10 days after confirmation of Perform a Invoice. • The Company reserves the right to revise the prices without any prior intimation.
- All Disputes are subject to Rajkot jurisdiction only.