

The Complete **Plumbing** solution

cPVC PIPES & FITTINGS

FOR HOT & COLD WATER

Application :

- Hot & Cold Water Plumbing.
- Corrosive Fluid Transportation.
- Chemical Fluid.
- Carrying Drinking Water.
- Residential Use.
- Industrial Use.

One Stop for multiple plumbing solution under one roof



PRODUCT FEATURES:



Corrosion Resistant



High Strength



UV Resistant



Effective Cost



Fire Resistant



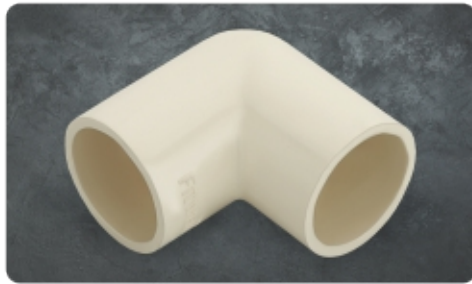
Easy to Install



Withstands temp. up to 93°C

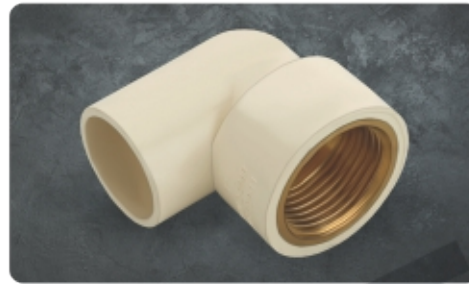


CPVC FITTINGS IN SDR-11 AS PER ASTM D2846



ELBOW

Size (Inch)	Size mm	Std.Pkd.	Qty./Box	RATE
1/2"	15	100	1200	
3/4"	20	100	500	
1"	25	50	250	
1.1/4"	32	30	150	
1.1/2"	40	10	90	
2"	50	8	40	



BRASS ELBOW

Size (Inch)	Size mm	Std.Pkd.	Qty./Box	RATE
1/2"	15	25	250	
3/4"	20	25	250	
1"	25	20	160	
3/4"x1/2"	20x15	25	600	
1"x1/2"	25x15	25	275	
1"x3/4"	25x20	25	225	



EQUAL TEE

Size (Inch)	Size mm	Std.Pkd.	Qty./Box	RATE
1/2"	15	50	800	
3/4"	20	50	350	
1"	25	20	180	
1.1/4"	32	20	100	
1.1/2"	40	10	70	
2"	50	4	32	



M.T.A.

Size (Inch)	Size mm	Std.Pkd.	Qty./Box	RATE
1/2"	15	100	800	
3/4"	20	100	800	
1"	25	50	400	
1.1/4"	32	25	250	
1.1/2"	40	20	160	
2"	50	15	105	
3/4"x1/2"	20x15	150	1050	



F.T.A.

Size (Inch)	Size mm	Std.Pkd.	Qty./Box	RATE
1/2"	15	100	700	
3/4"	20	100	600	
1"	25	50	350	
1.1/4"	32	25	200	
1.1/2"	40	20	120	
2"	50	15	60	
3/4"x1/2"	20x15	100	800	



BRASS TEE

Size (Inch)	Size mm	Std.Pkd.	Qty./Box	RATE
1/2"	15	20	200	
3/4"	20	35	245	
1"	25	25	150	
3/4"x1/2"	20x15	20	400	
1"x1/2"	25x15	25	200	
1"x3/4"	25x20	20	160	



BRASS M.T.A.

Size (Inch)	Size mm	Std.Pkd.	Qty./Box	RATE
1/2"	15	25	250	
3/4"	20	25	300	
1"	25	10	200	
1.1/4"	32	8	56	
1.1/2"	40	6	48	
2"	50	4	24	
3/4"x1/2"	20x15	25	500	
1"x1/2"	25x15	25	400	
1"x3/4"	25x20	10	100	



BRASS F.T.A.

Size (Inch)	Size mm	Std.Pkd.	Qty./Box	RATE
1/2"	15	25	300	
3/4"	20	20	400	
1"	25	10	200	
1.1/4"	32	16	80	
1.1/2"	40	6	48	
2"	50	4	32	
3/4"x1/2"	20x15	25	500	
1"x1/2"	25x15	25	600	
1"x3/4"	25x20	10	100	

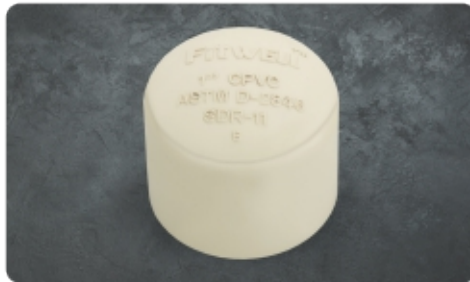


COUPLER

Size (Inch)	Size mm	Std.Pkd.	Qty./Box	RATE
1/2"	15	100	2000	
3/4"	20	100	800	
1"	25	50	400	
1.1/4"	32	50	200	
1.1/2"	40	20	180	
2"	50	15	90	



CPVC FITTINGS IN SDR-11 AS PER ASTM D2846



END CAP

Size (Inch)	Size mm	Std.Pkd.	Qty./Box	RATE
1/2"	15	100	3200	
3/4"	20	100	1500	
1"	25	100	700	
1.1/4"	32	50	400	
1.1/2"	40	25	250	
2"	50	20	120	



ELBOW 45°

Size (Inch)	Size mm	Std.Pkd.	Qty./Box	RATE
1/2"	15	100	1600	
3/4"	20	100	500	
1"	25	50	300	
1.1/4"	32	20	180	
1.1/2"				
2"				



UNION

Size (Inch)	Size mm	Std.Pkd.	Qty./Box	RATE
1/2"	15	25	300	
3/4"	20	25	300	
1"	25	20	180	
1.1/4"	32	15	120	
1.1/2"	40	15	75	
2"	50	8	32	



REDUCER BUSH

Size (Inch)	Size mm	Std.Pkd.	Qty./Box	RATE
3/4"x1/2"	20x15	100	1000	
1"x1/2"	25x15	100	1000	
1"x3/4"	25x20	100	1000	
1.1/4"x3/4"	32x20	60	540	
1.1/4"x1"	32x25	60	540	
1.1/2"x3/4"	40x20	50	350	
1.1/2"x1"	40x25	50	350	
1.1/2"x1.1/4"	40x32	50	350	
2"x3/4"	50x20	20	140	
2"x1"	50x25	20	140	
2"x1.1/4"	50x32	20	140	
2"x1.1/2"	50x40	20	160	



REDUCER COUPLER

Size (Inch)	Size mm	Std.Pkd.	Qty./Box	RATE
3/4"x1/2"	20x15	100	1000	
1"x1/2"	25x15	100	700	
1"x3/4"	25x20	100	500	
1.1/4"x3/4"	32x20	50	300	
1.1/4"x1"	32x25	40	280	
1.1/2"x3/4"	40x20	25	225	
1.1/2"x1"	40x25	20	200	
1.1/2"x1.1/4"	40x32	20	180	
2"x3/4"	50x20	15	90	
2"x1"	50x25	15	75	
2"x1.1/4"	50x32	15	75	
2"x1.1/2"	50x40	15	75	



REDUCER TEE

Size (Inch)	Size mm	Std.Pkd.	Qty./Box	RATE
3/4"x1/2"	20x15	20	200	
1"x1/2"	25x15	20	200	
1"x3/4"	25x20	20	200	
1.1/4"x3/4"	32x20	20	140	
1.1/4"x1"	32x25	20	120	
1.1/2"x3/4"	40x20	10	70	
1.1/2"x1"	40x25	10	60	
1.1/2"x1.1/4"	40x32	10	60	
2"x3/4"	50x20	10	70	
2"x1"	50x25	10	60	
2"x1.1/4"	50x32	5	45	
2"x1.1/2"	50x40	5	40	



CROSS TEE

Size (Inch)	Size mm	Std.Pkd.	Qty./Box	RATE
1/2"	15	50	300	
3/4"	20	50	300	
1"	25	25	125	
1.1/4"	32	15	105	



REDUCER ELBOW

Size (Inch)	Size mm	Std.Pkd.	Qty./Box	RATE
3/4"x1/2"	20x15	-	-	
1"x1/2"	25x15	-	-	
1"x3/4"	25x20	50	300	



SOCKET TANK NIPPLE

Size (Inch)	Size mm	Std.Pkd.	Qty./Box	RATE
3/4"	20	40	280	
1"	25	40	200	
1.1/4"	32	25	150	
1.1/2"	40	20	150	



CPVC FITTINGS IN SDR-11 AS PER ASTM D2846



TANK CONT.

Size (Inch)	Size mm	Std.Pkd.	Qty./Box	RATE
1/2"	15	25	300	
3/4"	20	25	275	
1"	25	20	160	
1.1/4"	32	15	90	
1.1/2"	40	12	72	
2"	50	6	48	



METAL CLAMP

Size (Inch)	Size mm	Std.Pkd.	Qty./Box	RATE
1/2"	16	100	1200	
3/4"	22	100	1000	
1"	29	100	700	
1.1/4"	35	100	600	
1.1/2"	41	100	500	
2"	50	100	400	



NAIL CLAMP

Size (Inch)	Size mm	Std.Pkd.	Qty./Box	RATE
1/2"	16	100	1200	
3/4"	22	100	1000	
1"	29	100	700	
1.1/4"	35	100	600	
1.1/2"	41	100	500	
2"	50	100	400	



BRASS FORGED BALL VALVE

Size (Inch)	Size mm	Std.Pkd.	Qty./Box	RATE
1/2"	15	2	100	
3/4"	20	2	100	
1"	25	2	100	
1.1/4"	32	1	50	
1.1/2"	40	1	50	
2"	50	1	50	



BALL VALVE

Size (Inch)	Size mm	Std.Pkd.	Qty./Box	RATE
1/2"	15	20	360	
3/4"	20	15	270	
1"	25	8	144	
1.1/4"	32	6	108	
1.1/2"	40	3	54	
2"	50	2	36	



LONG HANDEL BALL VALVE

Size (Inch)	Size mm	Std.Pkd.	Qty./Box	RATE
1/2"	15	20	360	
3/4"	20	15	270	
1"	25	6	108	
1.1/4"	32	6	108	
1.1/2"	40	3	54	
2"	50	2	36	



BRASS FORGED CHECK VALVE

Size (Inch)	Size mm	Std.Pkd.	Qty./Box	RATE
1/2"	15	1	100	
3/4"	20	1	100	
1"	25	1	100	
1.1/4"	32	1	50	
1.1/2"	40	1	50	
2"	50	1	50	



CONCEALED VALVE

Size (Inch)	Size mm	Qty./Box	RATE
3/4"	20	3	
1"	25	3	



STOP VALVE

Size (Inch)	Size mm	Qty./Box	RATE
3/4"	20	3	
1"	25	3	

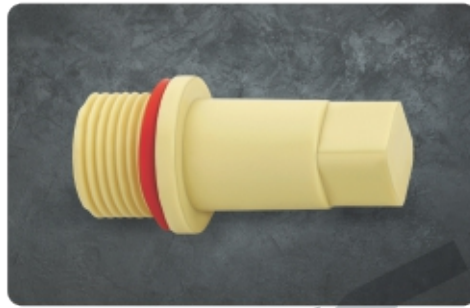


CPVC FITTINGS IN SDR-11 AS PER ASTM D2846



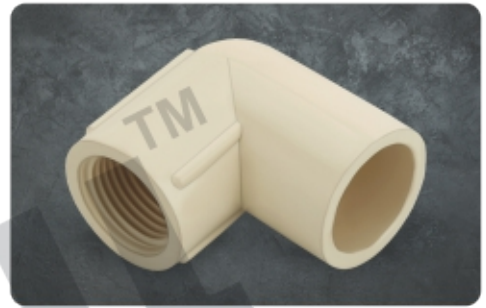
TRANSITION BUSH

Size (Inch)	Size mm	Std.Pkd.	Qty./Box	RATE
3/4"	20	100	1300	



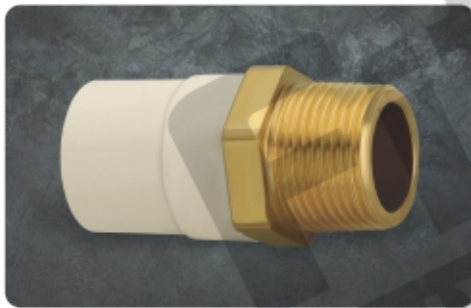
END PLUG

Size (Inch)	Size mm	Std.Pkd.	Qty./Box	RATE
1/2"	15	100	1000	



THREAD ELBOW

Size (Inch)	Size mm	Std.Pkd.	Qty./Box	RATE
3/4" x 1/2"	20x15	100	500	



BRASS MTA HEXAGON

Size (Inch)	Size mm	Std.Pkd.	Qty./Box	RATE
3/4"	20	22	176	
1"	25	13	78	
1.1/4"	32	06	60	
1.1/2"	40	04	32	
3/4"x1/2"	20x15	24	192	



BRASS FTA HEXAGON

Size (Inch)	Size mm	Std.Pkd.	Qty./Box	RATE
3/4"	20	20	160	
1"	25	11	66	
1.1/4"	32	06	60	
1.1/2"	40	04	32	
3/4"x1/2"	20x15	20	200	



MIXER ADAPTOR ALL IN ONE 6"

Size (Inch)	Size mm	Std.Pkd.	Qty./Box	RATE
3/4"x1/2"	20x15	1	20	



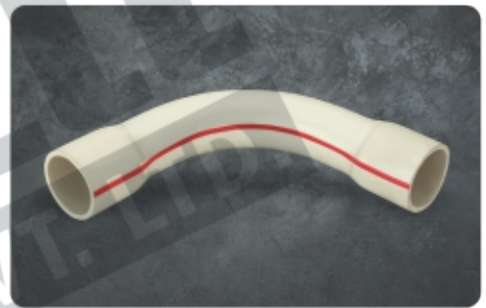
SOLVENT CEMENT

Size Ml. (Tin)	Box Packing	RATE
59 ml.	30	
118 ml.	24	
237 ml.	24	
473 ml.	12	
946 ml.	6	



STEPOVER BEND

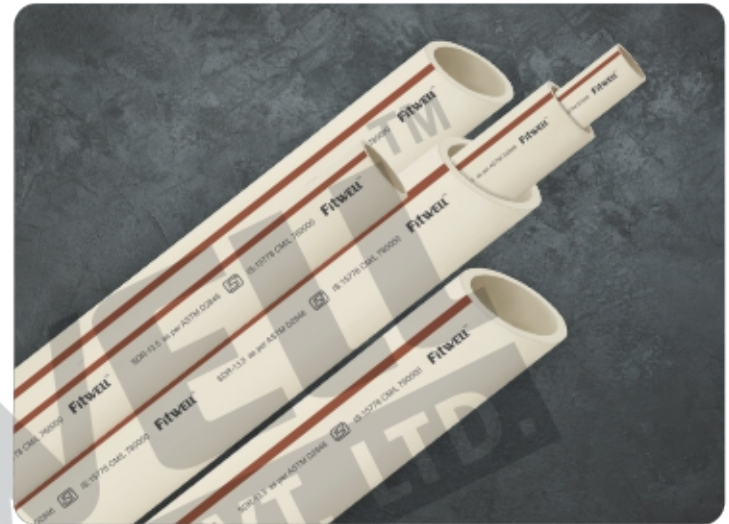
Size (Inch)	Size mm	Std.Pkd.	Qty./Box	RATE
1/2"	15	20	220	
3/4"	20	25	175	
1"	25	20	100	



LONG BEND

Size (Inch)	Size mm	Std.Pkd.	Qty./Box	RATE
1/2"	15	20	220	
3/4"	20	25	175	
1"	25	20	100	

CPVC PIPES IN SDR-11 & 13.5 AS PER ASTM D2846 IN CTS (COPPER TUBE SIZE)



cPVC SDR-11

Size (Inch)	Size mm	3Mtr. Pack	5Mtr. Pack	RATE 3Mtr.
1/2"	15	50	50	
3/4"	20	50	30	
1"	25	30	20	
1.1/4"	32	20	10	
1.1/2"	40	15	10	
2"	50	10	5	

cPVC SDR-13.5

Size (Inch)	Size mm	3Mtr. Pack	5Mtr. Pack	RATE 3Mtr.
1/2"	15	50	50	
3/4"	20	50	30	
1"	25	30	20	
1.1/4"	32	20	10	
1.1/2"	40	15	10	
2"	50	10	5	

STANDARDS

- ASTM D 1784 :** Specification for Rigid cPVC Compounds
- ASTM D 2846 :** Specification for Rigid cPVC Plastic & Fittings for Hot & Cold Water Distribution
- ASTM F 493 :** Specification for Solvent Cement for cPVC Plastic Pipes & Fittings

Pressure Rating of cPVC Pipes (SDR-11 & SDR-13.5)

SIZE	Pipes Size in Inch	1/2"	3/4"	1"	1 1/4"	1 1/2"	2"
	Pipes Size in mm	15	20	25	32	40	50
CLASS 2 SDR-13.5	Average Outer Diameter (mm)	15.90	22.20	28.60	34.90	41.30	54.00
	Min. Wall Thickness (mm)	1.40	1.65	2.12	2.59	3.06	4.00
	Pressure Rating (kg./cm ²) of 23°C	22.50	22.50	22.50	22.50	22.50	22.50
	Pressure Rating (kg./cm ²) of 82°C	5.60	5.60	5.60	5.60	5.60	5.60
CLASS 1 SDR-11	Average Outer Diameter (mm)	15.90	22.20	28.60	34.60	41.30	54.00
	Min. Wall Thickness (mm)	1.73	2.03	2.59	3.18	3.76	4.90
	Pressure Rating (kg./cm ²) of 23°C	28.10	28.10	28.10	28.10	28.10	28.10
	Pressure Rating (kg./cm ²) of 82°C	7.00	7.00	7.00	7.00	7.00	7.00

INSTALLATION METHOD OF 'FITWELL' cPVC & uPVC PIPES & FITTINGS



Terms & Conditions :

- The above prices are Ex-Factory, Freight will be charged extra as applicable. • Taxes : GST will be Extra Charged. • Advance Payment.
- Payment should be deposited in our account against Perform a Invoice in terms & conditions of Perform a Invoice • Late payment interest will be charged @ 18% Flat.
- Supply will be made within 7-10 days after confirmation of Perform a Invoice. • The Company reserves the right to revise the prices without any prior intimation.
- All Disputes are subject to Rajkot jurisdiction only.